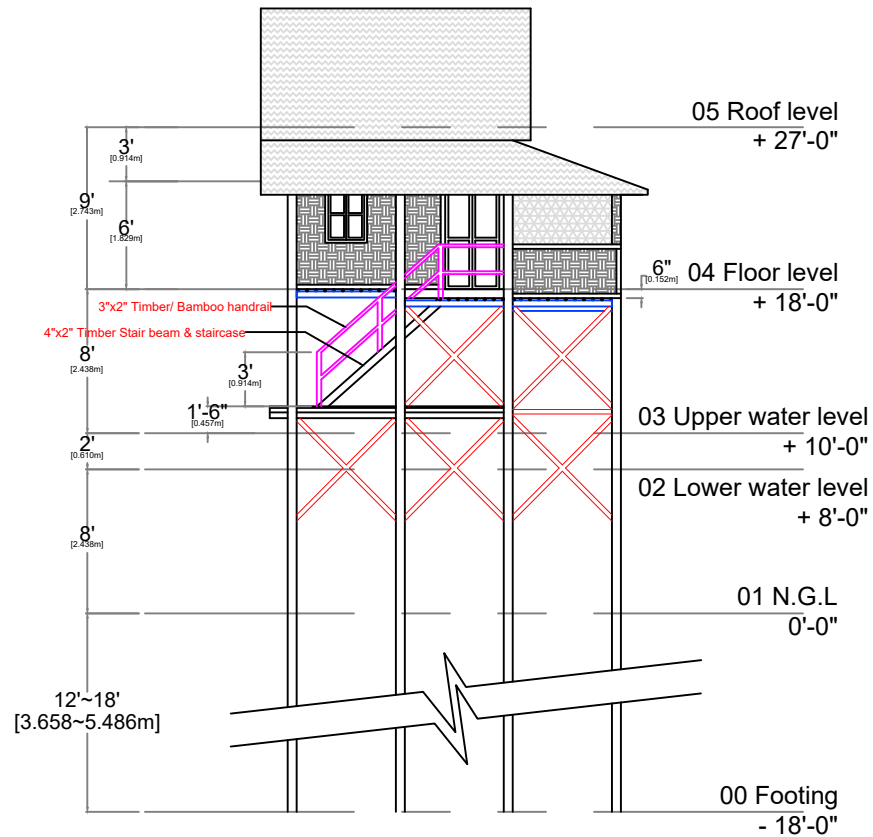


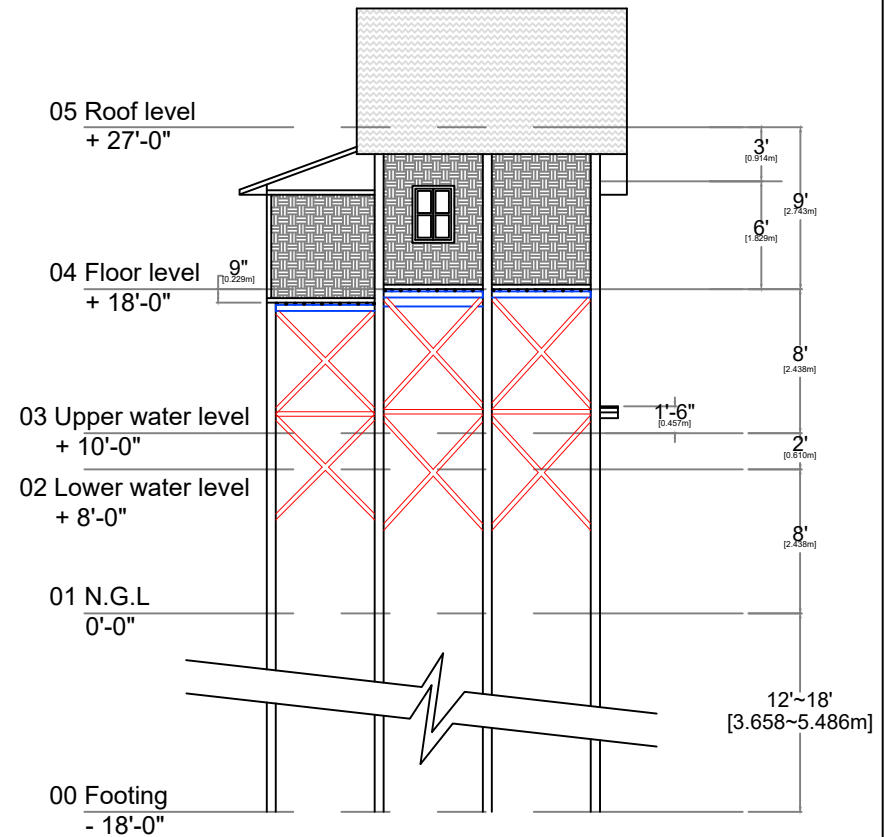
[illegible]

CCCM CLUSTER
Myanmar

Nipa/ Palm Leave Roof



Right Side View



Left Side View

Transitional Shelter Design_ Inle lake area

Dwg No. 2

Scale: $\frac{3}{32}" = 1'-0"$

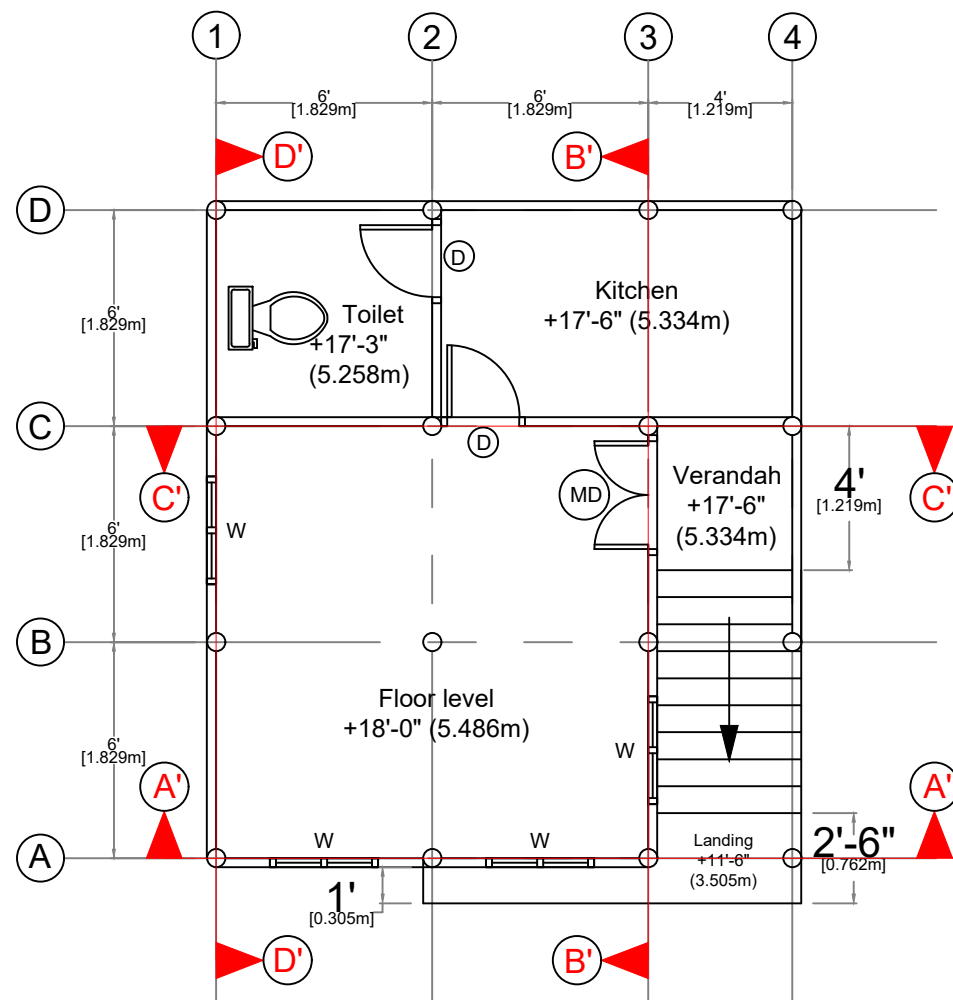
Date: 13-Aug-2025



**MYANMAR
SHELTER CLUSTER**
Coordinating Humanitarian Shelter and Settlements



CCCM CLUSTER
Myanmar



Floor Plan
(+18'-0" ~ 5.486m)

Transitional Shelter Design_ Inle lake area

Dwg No. 3

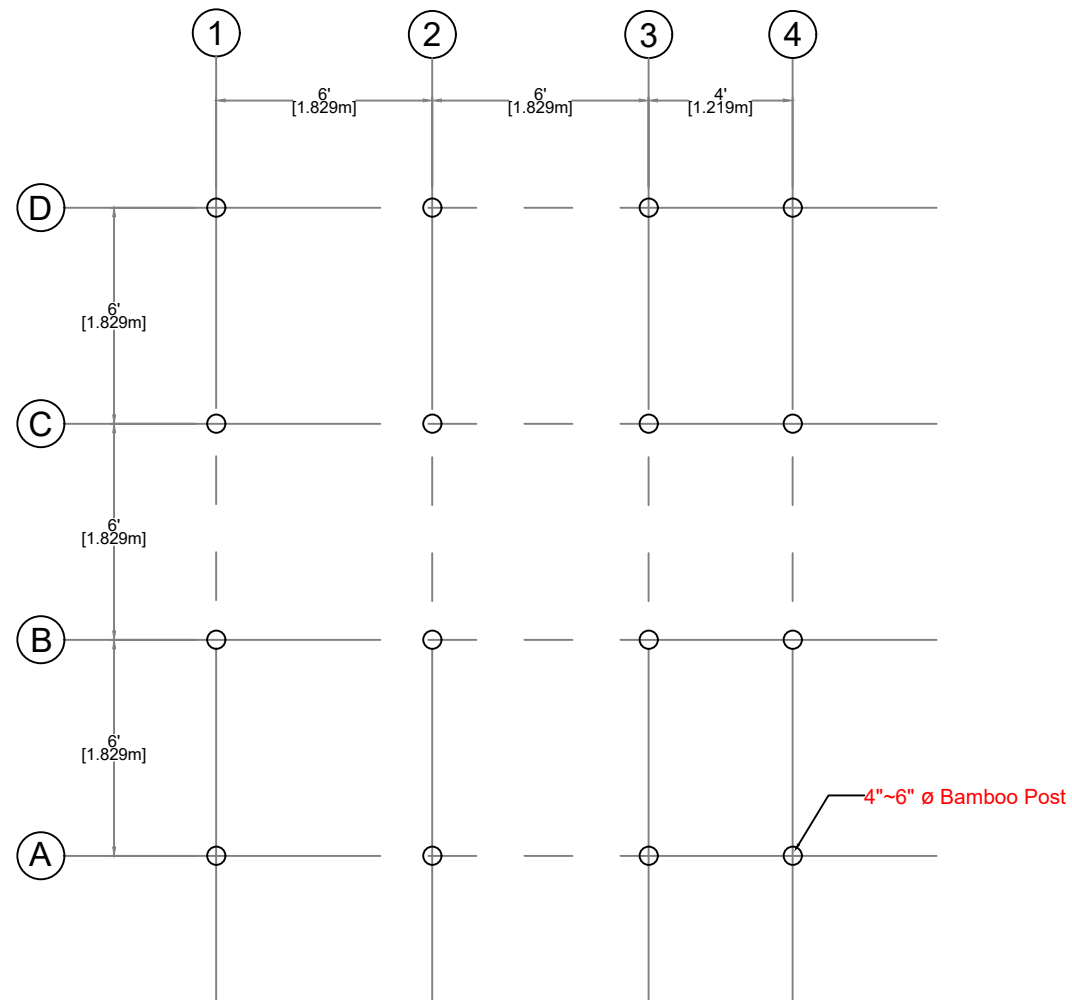
Scale: $\frac{3}{16}" = 1'-0"$

Date: 13-Aug-2025



MYANMAR
SHELTER CLUSTER
Coordinating Humanitarian Shelter and Settlements





Column Plan

Transitional Shelter Design_ Inle lake area

Dwg No. 4

Scale: $\frac{3}{16}" = 1'-0"$

Date: 13-Aug-2025



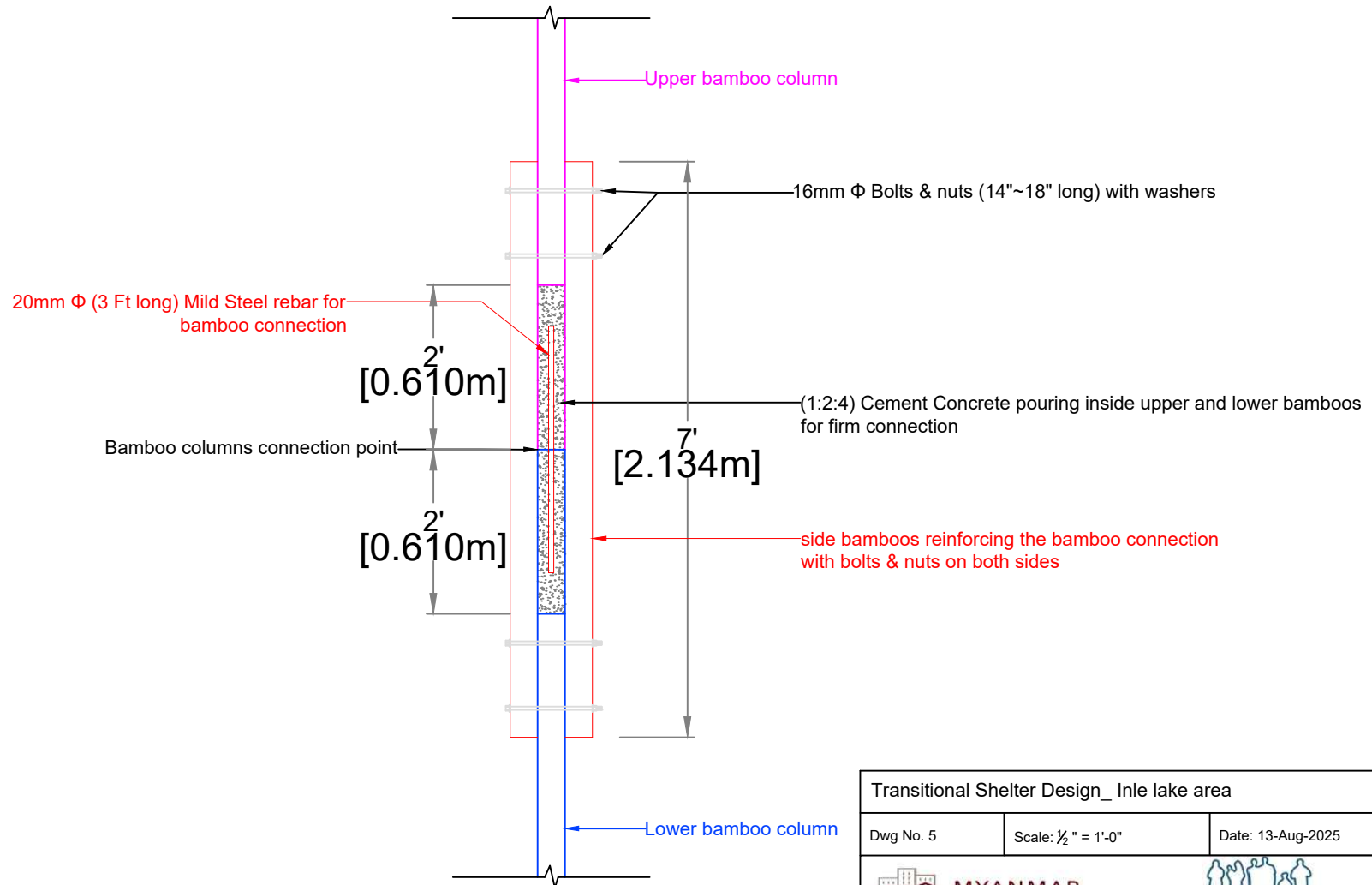
**MYANMAR
SHELTER CLUSTER**
Coordinating Humanitarian Shelter and Settlements





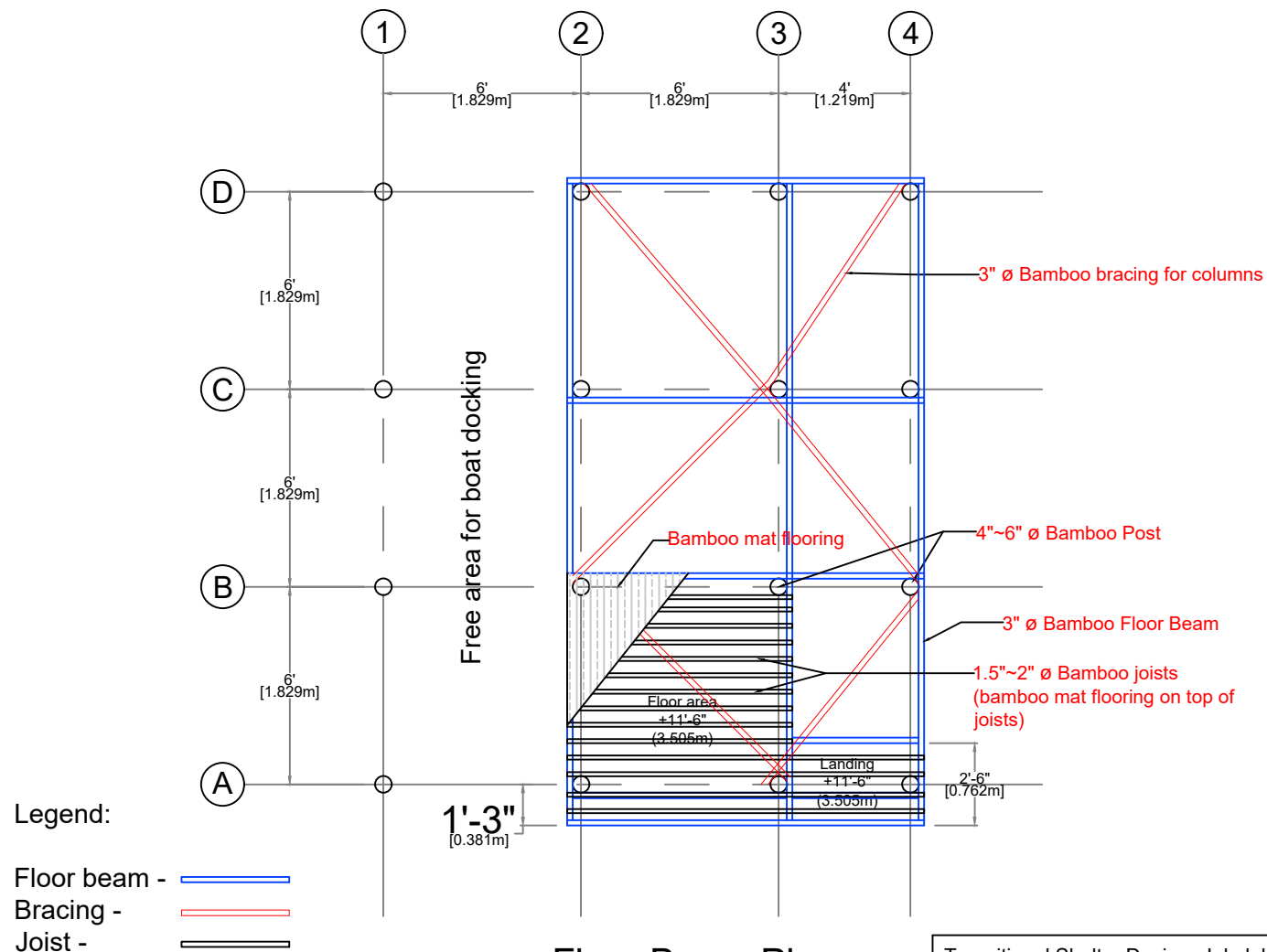
CCCM CLUSTER
Myanmar

Bamboo column connection details

(In case the bamboo column(s) need connection at some point!)



Transitional Shelter Design_ Inle lake area		
Dwg No. 5	Scale: $\frac{1}{2}$ " = 1'-0"	Date: 13-Aug-2025
 MYANMAR SHELTER CLUSTER Coordinating Humanitarian Shelter and Settlements		 CCCM CLUSTER Myanmar



Floor Beam Plan
(11'-6" ~ 3.505m)

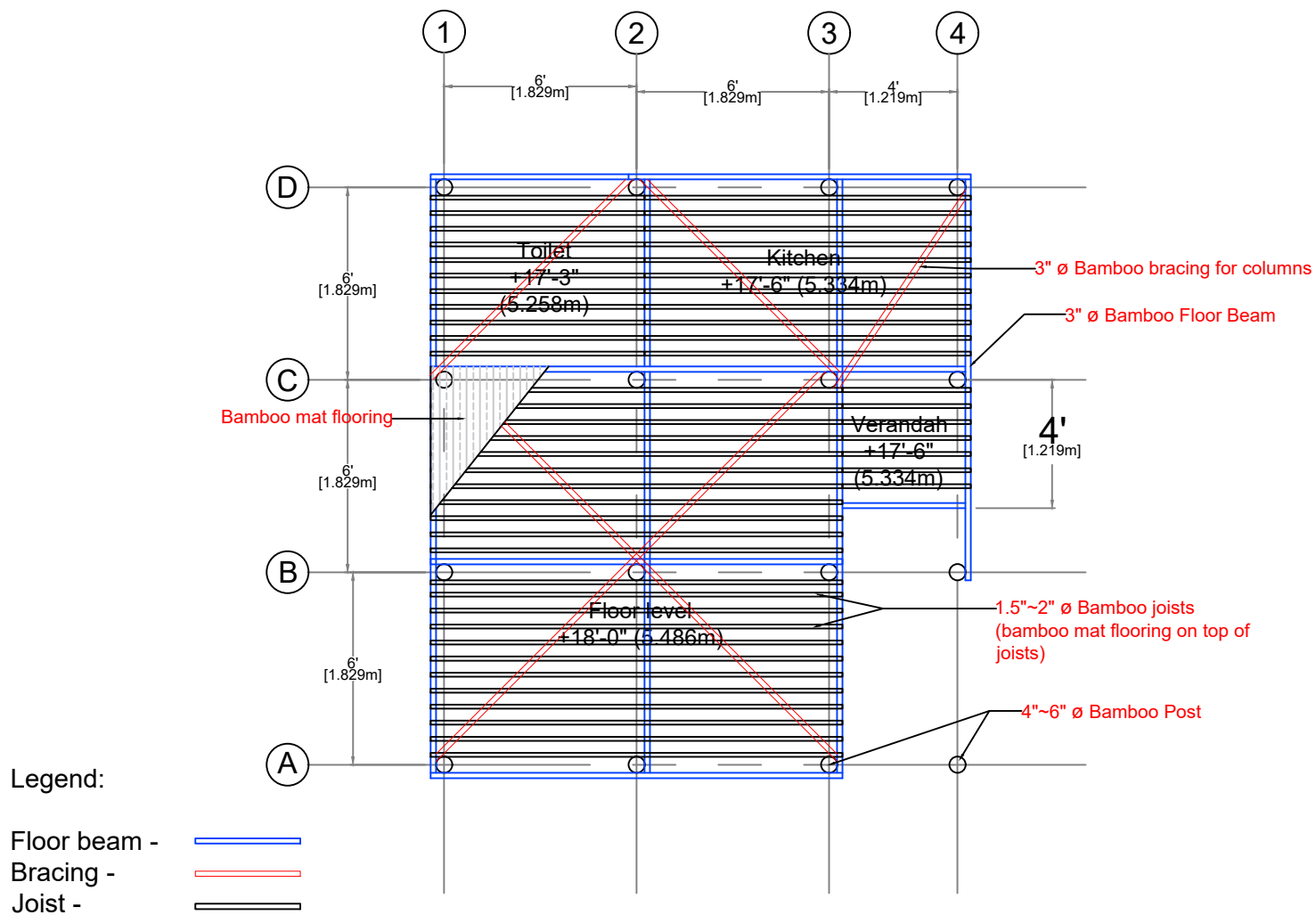
Transitional Shelter Design_ Inle lake area

Dwg No. 6

Scale: $\frac{3}{16}" = 1'-0"$

Date: 13-Aug-2025





Floor Beam Plan
(+18'-0" ~ 5.486m)

Transitional Shelter Design_ Inle lake area

Dwg No. 7

Scale: $\frac{3}{16}" = 1'-0"$

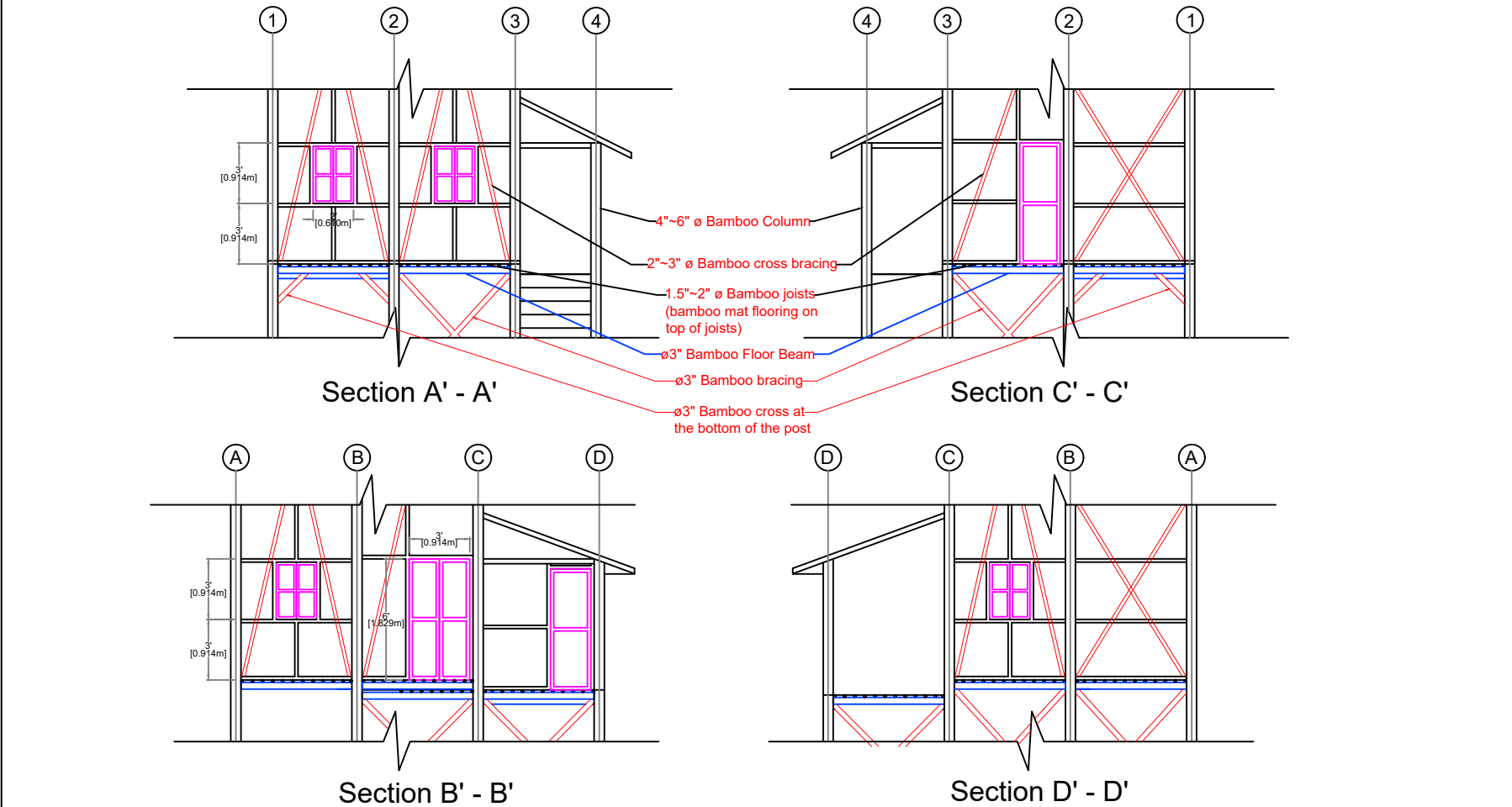
Date: 13-Aug-2025



MYANMAR
SHELTER CLUSTER
Coordinating Humanitarian Shelter and Settlements





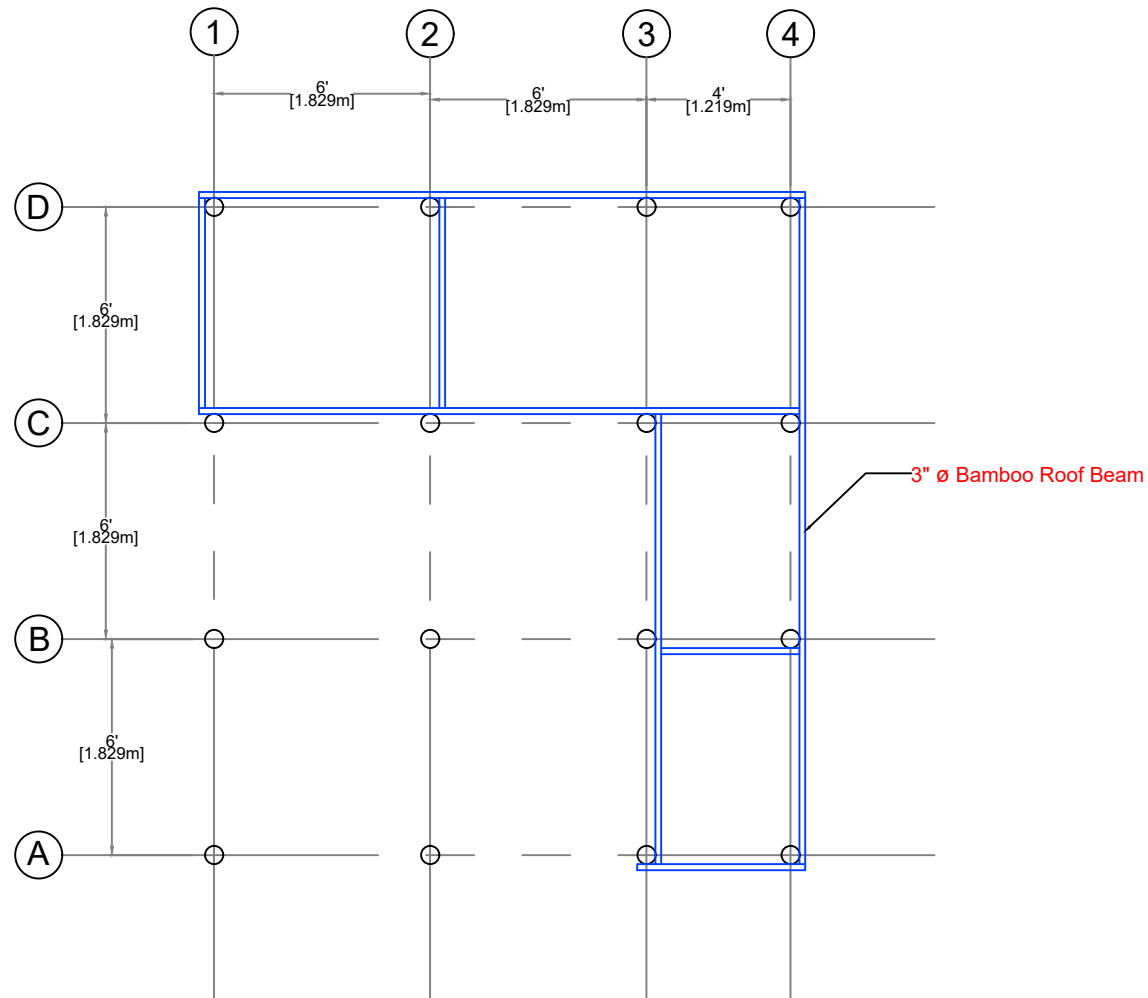
Cross-Section for Main Wall Frames





NOTE:

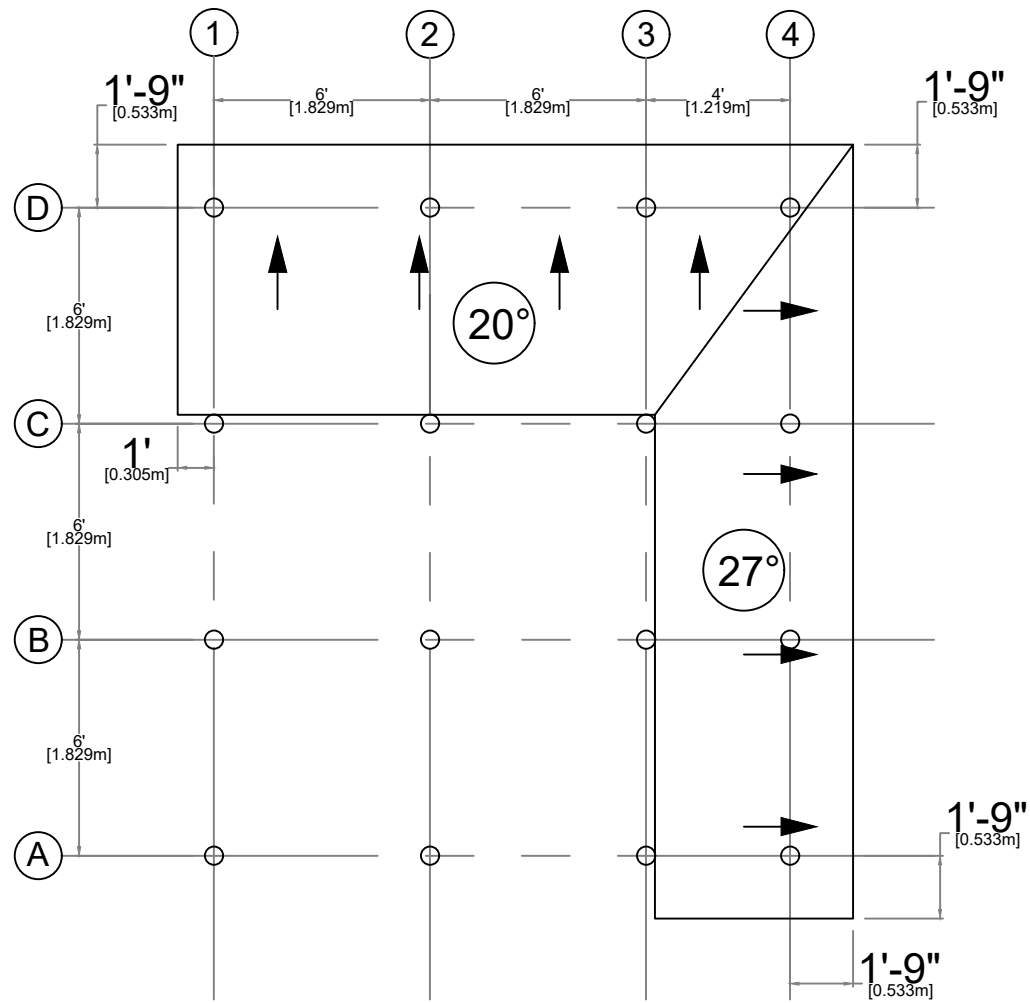
1. The cluster does not recommend using Asbestos-Containing Materials (ACM) in any part of the shelter!
2. Door and window frames must be 3"x2" timber while other struts and bracing can be 2"~3" ø bamboo.

Transitional Shelter Design_ Inle lake area		
Dwg No. 8	Scale: $\frac{1}{8}$ " = 1'-0"	Date: 13-Aug-2025
 <p>MYANMAR SHELTER CLUSTER Coordinating Humanitarian Shelter and Settlements</p>		 <p>CCCM CLUSTER Myanmar</p>





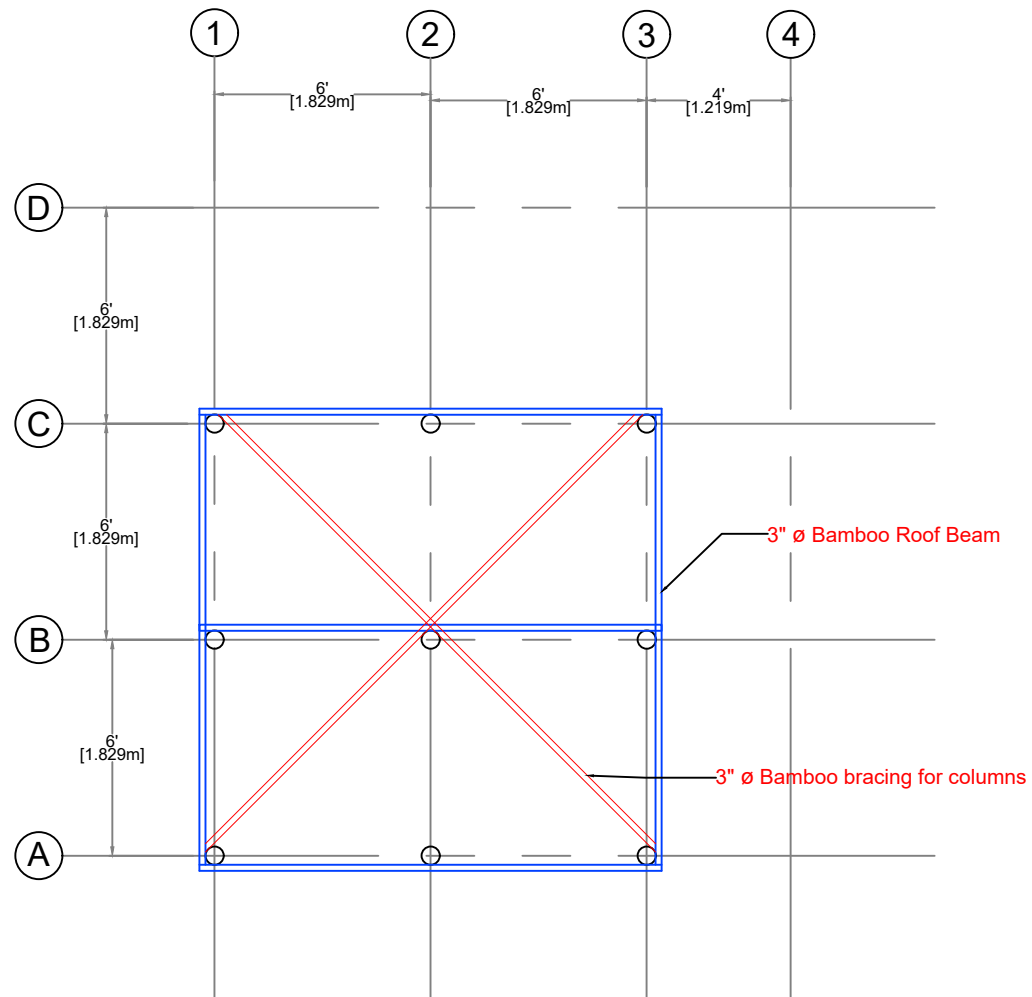
Roof Beam Plan
 (+24'-0" ~ 7.315m)

Transitional Shelter Design_ Inle lake area		
Dwg No. 9	Scale: $\frac{3}{16}" = 1'-0"$	Date: 13-Aug-2025
 MYANMAR SHELTER CLUSTER Coordinating Humanitarian Shelter and Settlements		



Roof Plan
(+24'-0" ~ 7.315m)

Transitional Shelter Design_ Inle lake area		
Dwg No. 10	Scale: $\frac{3}{16}" = 1'-0"$	Date: 13-Aug-2025
 MYANMAR SHELTER CLUSTER Coordinating Humanitarian Shelter and Settlements		 CCCM CLUSTER Myanmar



Roof Beam Plan
(+27'-0" ~ 8.230m)

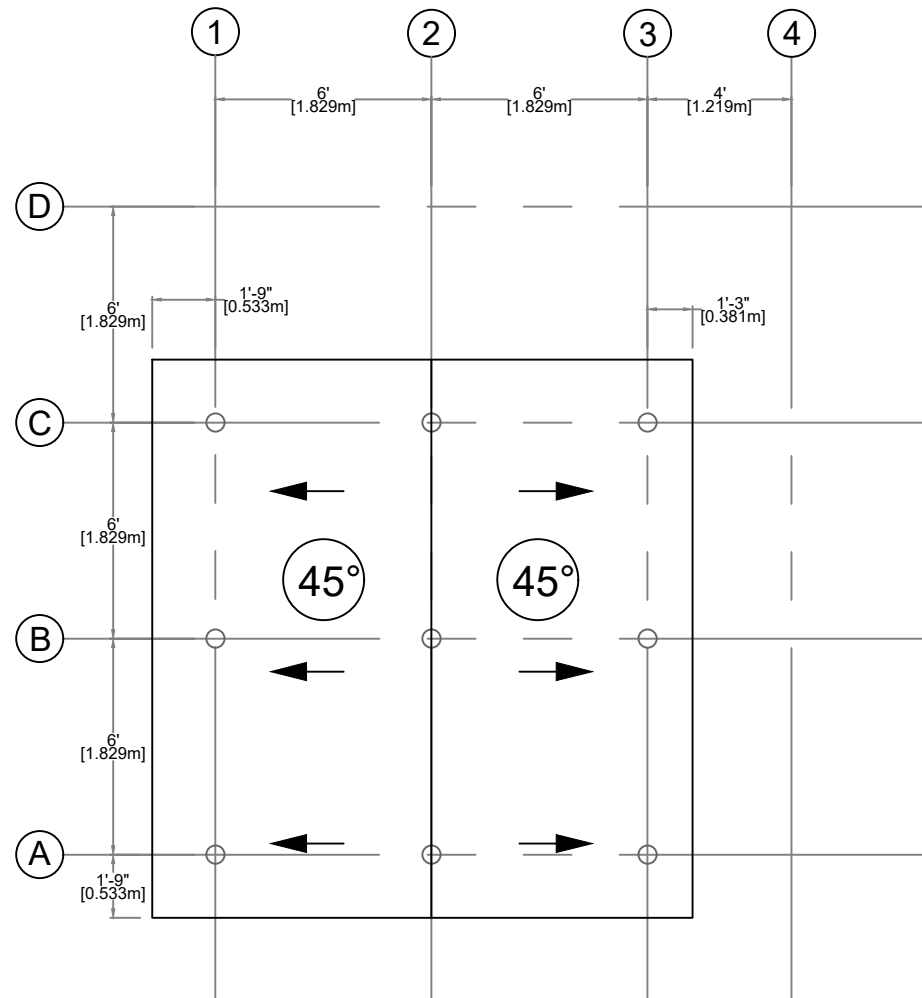
Transitional Shelter Design_ Inle lake area

Dwg No. 11



Scale: $\frac{3}{16}" = 1'-0"$

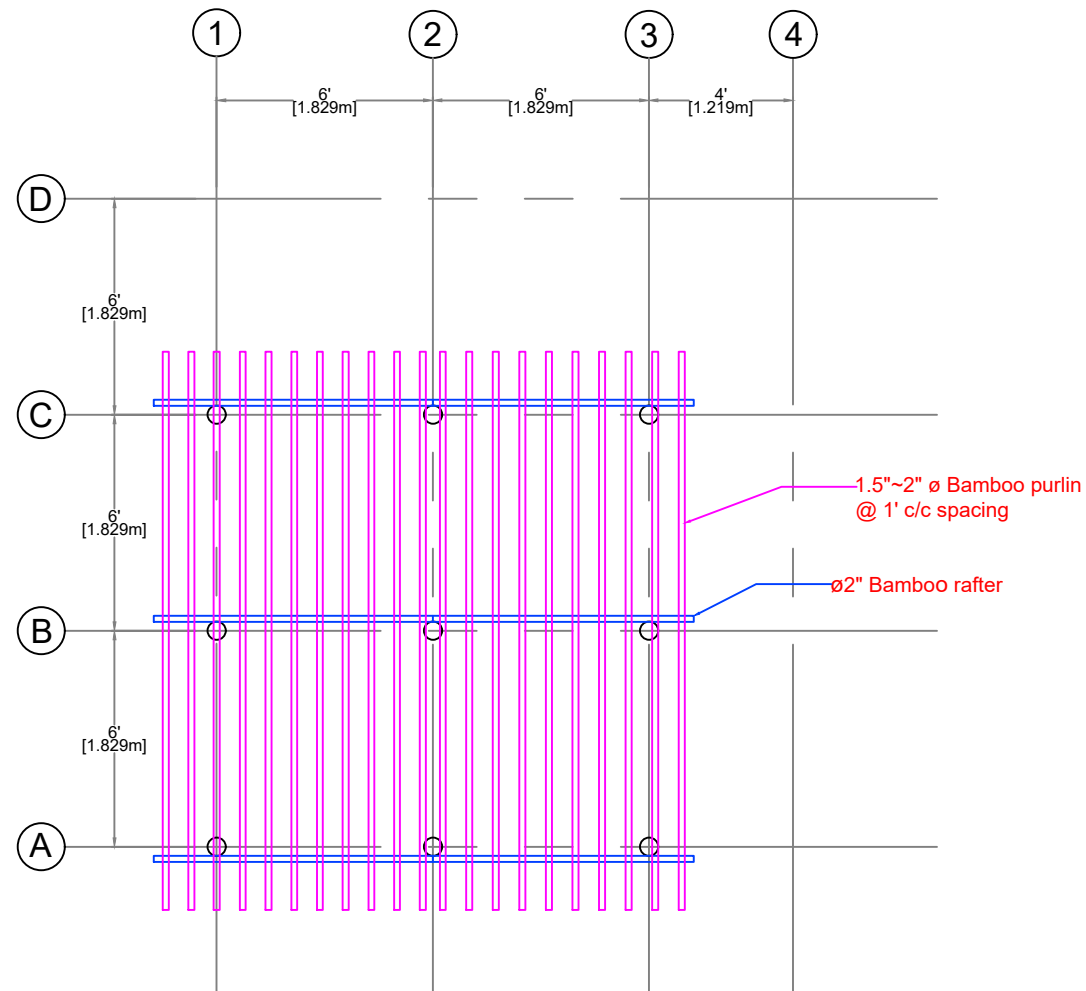
Date: 13-Aug-2025





Roof Plan (Nipa/ Palm Roof)
(+27'-0" ~ 8.230m)

Transitional Shelter Design_ Inle lake area		
Dwg No. 12	Scale: $\frac{3}{16}" = 1'-0"$	Date: 13-Aug-2025
 MYANMAR SHELTER CLUSTER Coordinating Humanitarian Shelter and Settlements		



Roof Truss & Rafter Plan (Nipa/ Palm roof)
(+27'-0" ~ 8.230m)

Transitional Shelter Design_ Inle lake area

Dwg No. 13

Scale: $\frac{3}{16}" = 1'-0"$

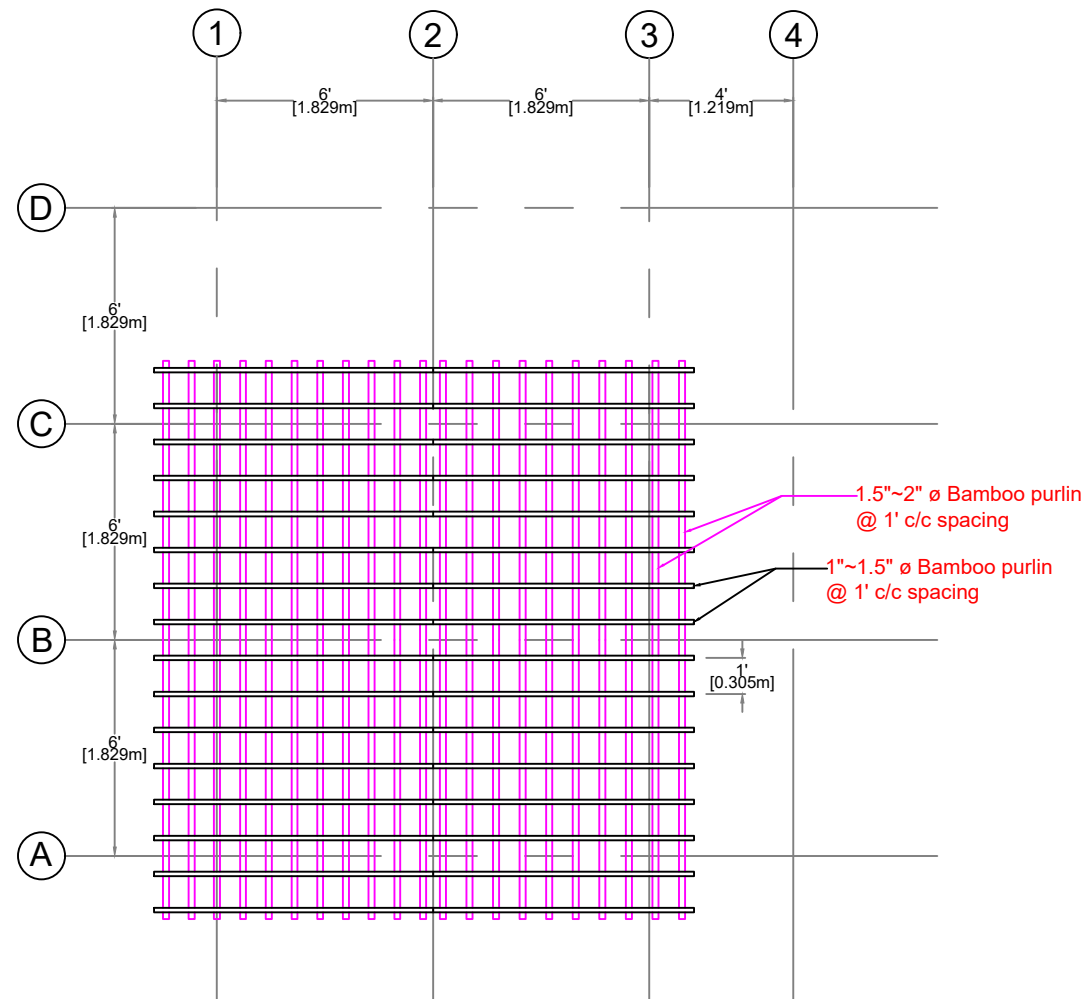
Date: 13-Aug-2025



**MYANMAR
SHELTER CLUSTER**
Coordinating Humanitarian Shelter and Settlements



CCCM CLUSTER
Myanmar



Purlin Plan (Nipa/ Palm roof)
(+27'-0" ~ 8.230m)

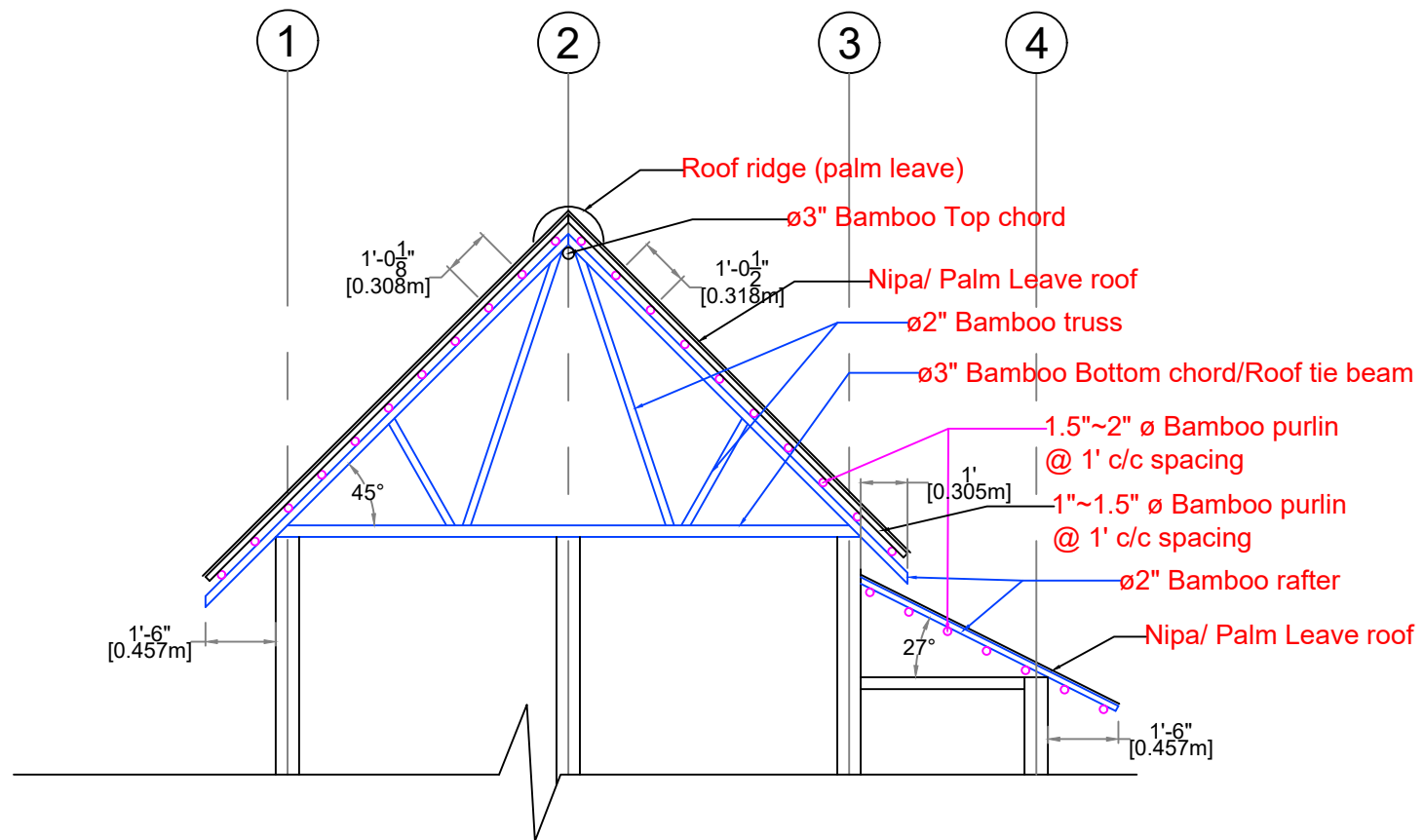
Transitional Shelter Design_ Inle lake area

Dwg No. 14

Scale: $\frac{3}{16}" = 1'-0"$

Date: 13-Aug-2025





**Roof Truss Details
(Nipa/ Palm Roof)**

NOTE:

1. The cluster does not recommend using Asbestos-Containing Materials (ACM) in any part of the shelter!
2. If location is prone to cyclones and very strong wind, roof overhang shall be max; 1 ft ~ 30 cm length.

Transitional Shelter Design_ Inle lake area

Dwg No. 15

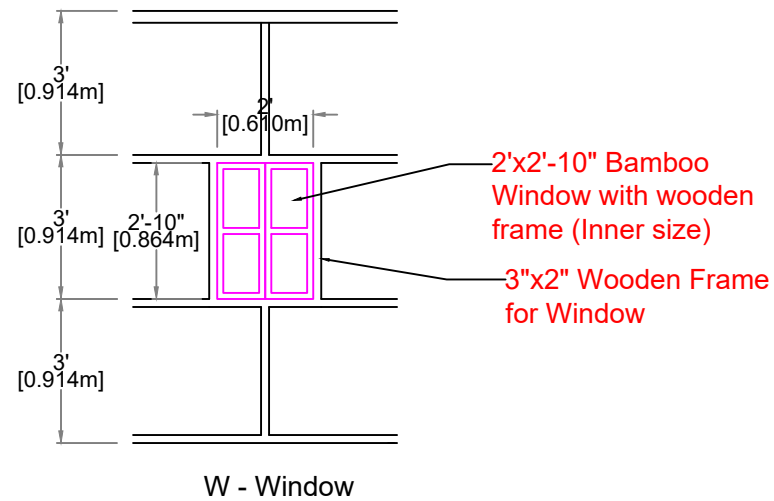
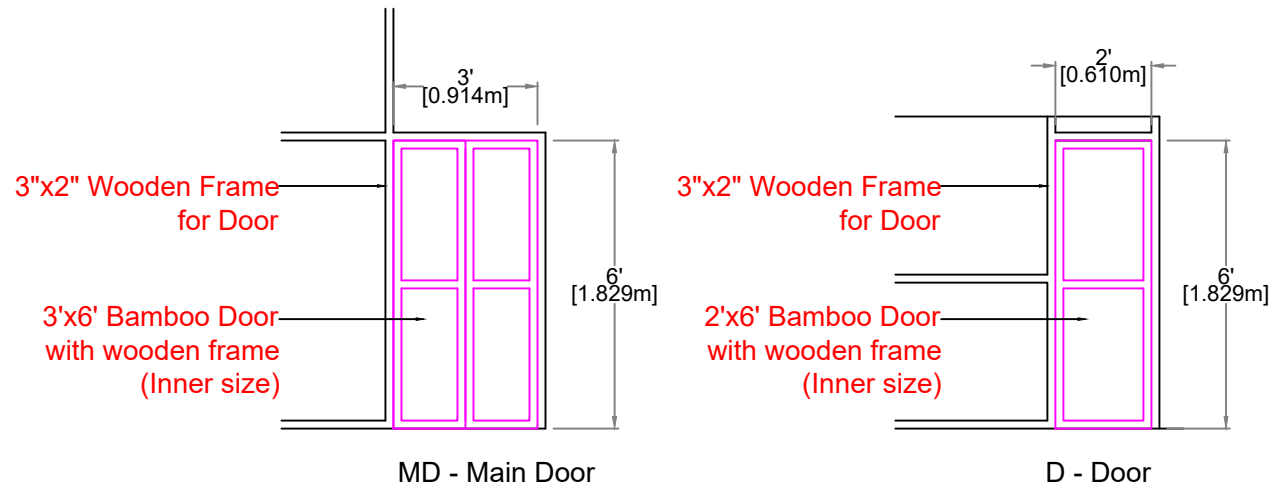
Scale: $\frac{1}{4}$ " = 1'-0"

Date: 13-Aug-2025




**MYANMAR
SHELTER CLUSTER**
Coordinating Humanitarian Shelter and Settlements





Door & Window Details

Transitional Shelter Design_ Inle lake area		
Dwg No. 16	Scale: $\frac{1}{4}" = 1'-0"$	Date: 13-Aug-2025
 MYANMAR SHELTER CLUSTER Coordinating Humanitarian Shelter and Settlements		